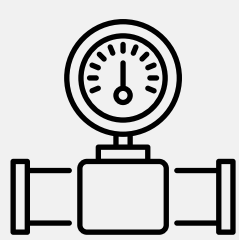
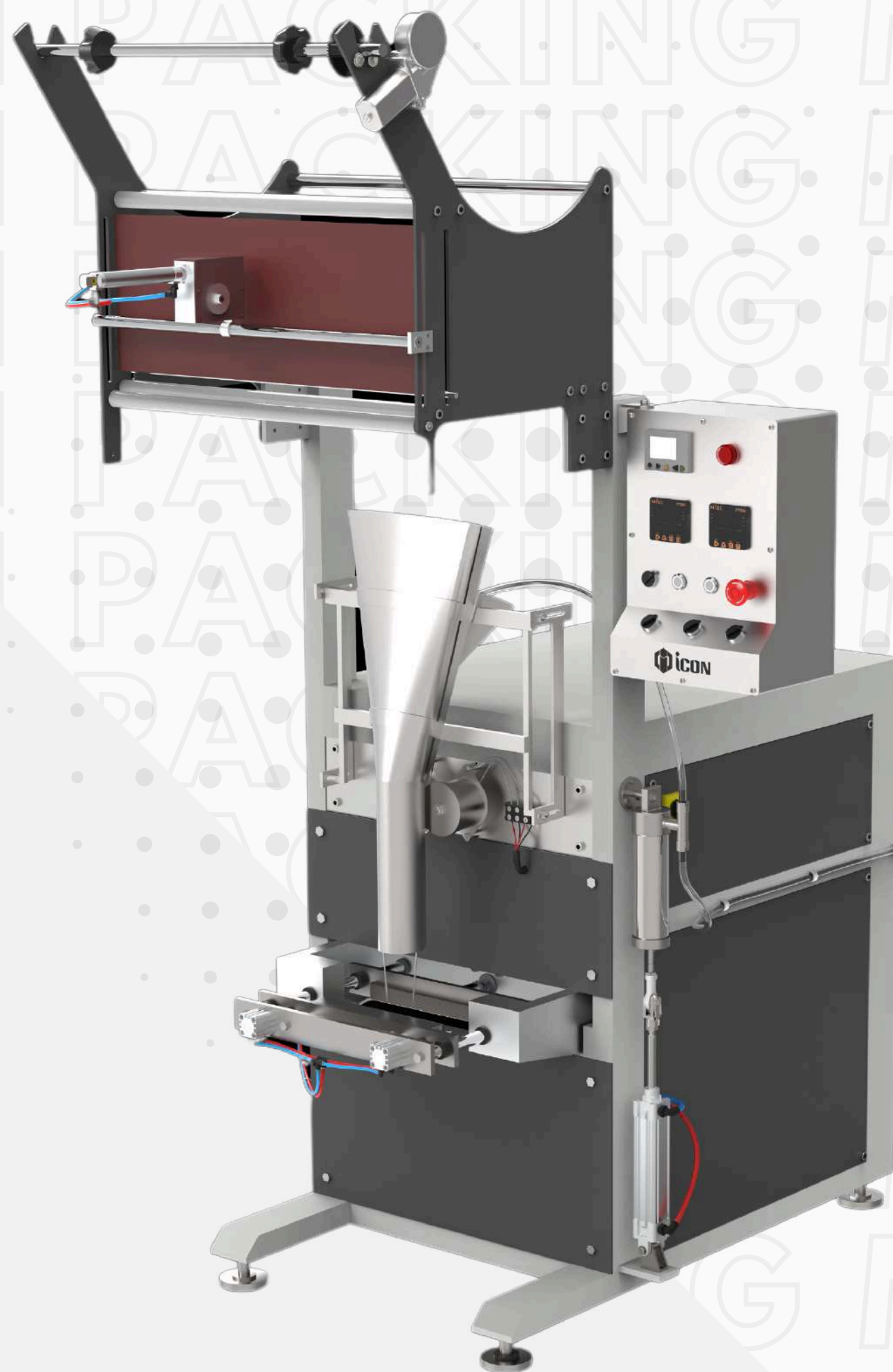


LIQUID FILLING VFFS PRIME



**Pneumatic
Operations**



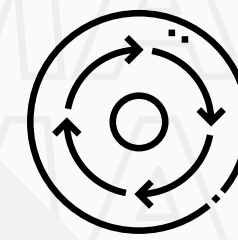
**Limited
Weight Variants**



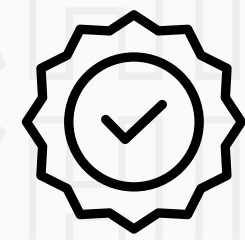
**Hygienic & Safe
Design**



**Secured
Sealing**



**Consistent
Weighing**



**International
Standards**

The Liquid Filling VFFS (Vertical Form Fill Seal) machine is a versatile and efficient packaging solution designed for filling and sealing liquid products. It combines precision filling with high-speed operation, ensuring leak-proof, hygienic packaging. Built with robust stainless steel construction, it meets food-grade standards for safety and reliability.

This machine offers advanced PLC controls, adjustable filling volumes, and compatibility with a wide range of pouch sizes. Its compact design and user-friendly interface make it ideal for seamless integration into production lines.

The Liquid Filling VFFS machine is suitable for packaging a variety of liquid products, including sauces, oils, beverages, detergents, and other viscous or free-flowing liquids. It is widely used in industries such as food and beverage, cosmetics, pharmaceuticals, and household products.

Easy to Operate

Designed with simplicity, our machine features an intuitive smart interface and straightforward controls, ensuring easy operation for all experience levels.

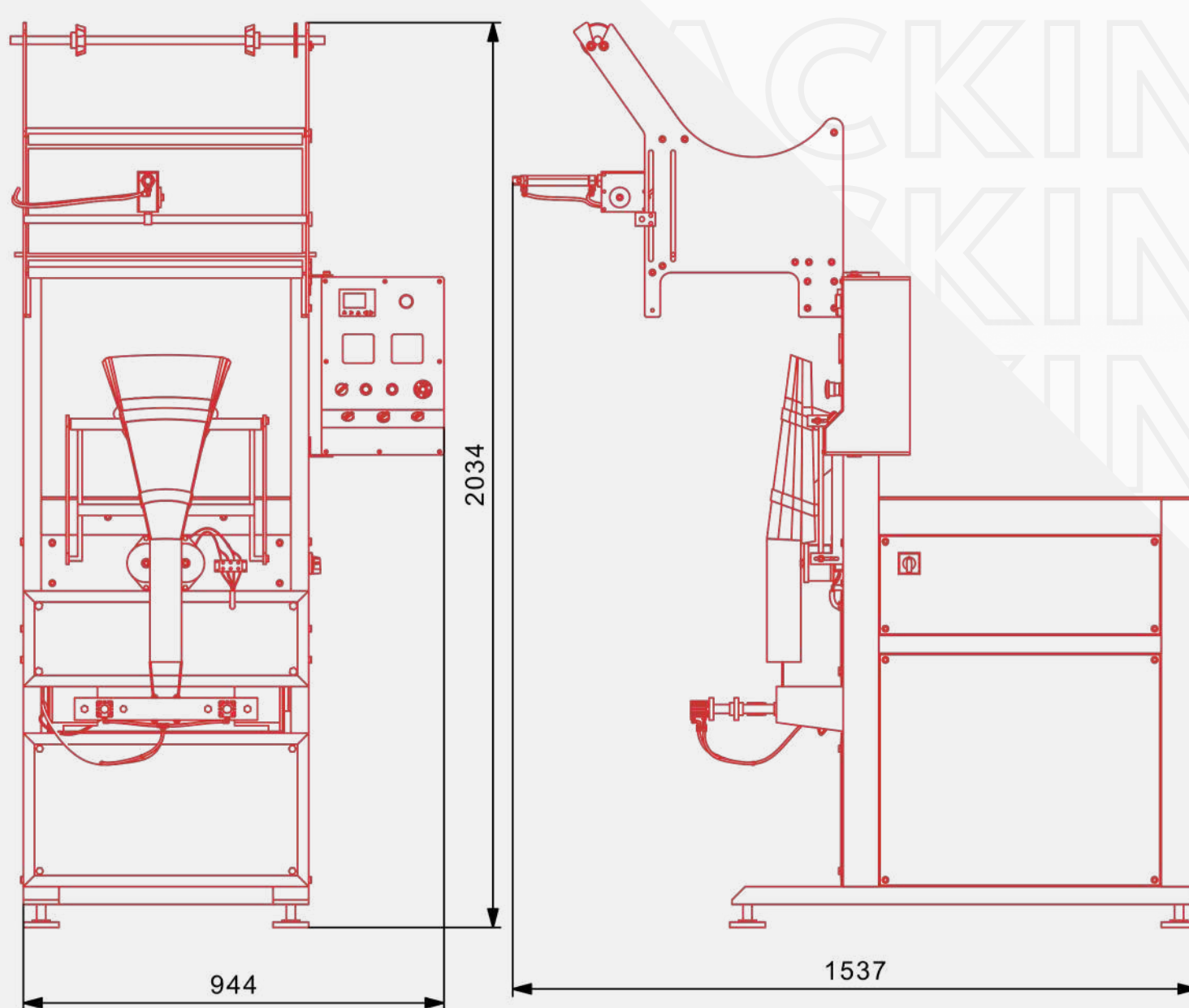
Easy Maintenance

With a focus on convenience, our machine is engineered for easy maintenance, featuring accessible components and straightforward service procedures.

Rapid Tech Support

Benefit from our 24*7 rapid tech support, offering prompt assistance and solutions to minimize downtime and keep your machine running smoothly.

DIMENSIONS



TECHNICAL SPECIFICATIONS

Pump Capacity	Depend on Product	Contact Parts	Stainless Steel
Filling System	Piston Filling	Air Compressor Required	3 HP
Sealing Type	Center Seal, Side Seal	Air Required	6 - 7 Bar
Packing Material	Laminated Heat Sealable Film	Power	4 KW (3 Phase)
Filling Volume	Adjustable with strock	Batch Type Coding	Pneumatic Batch Coding
Output Speed	15-20 Pouch/Min (Depend on Product)	Printing Area	35 mm x 35 mm
Machine Weight	550 Kg (Approx)	Operation	Pneumatic & Electronics, Fuji Make
Machine Construction	M.S. Duly Powder Coated	Pneumatic Components	SMC Make
		Error In Weight	+ / - 2%

*The above mentioned values are indicative and can be modified at any time at the discretion of the company.